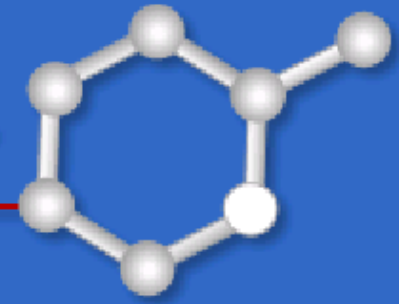




DIABETES TECHNOLOGY SOCIETY

Applying science and engineering to fight diabetes

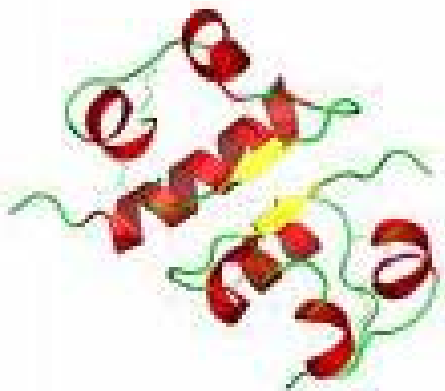


Re-Engineering Insulin: Can We Improve on Mother Nature?

November 13, 2010

Bethesda, MD

Alexander Fleming, MD



Presenter Disclosure

Alexander Fleming, M.D.

Board Member/Advisory Panel/Consultant:

Amgen, Amylin, American Type Culture Collection, Andromeda, Arisaph, Salutria, BCT, BioCon, Can-Am, Circ Pharma, Diasome, Elona, Eris, Glenmark, Helsinn, Indigene, Integrium, Institute of Pharmaceutical Discovery, Isis, Lilly Lipothrea, MannKind Corporation, N-Gene, Novartis Pharmaceuticals Corporation, Novo Nordisk, Inc., Orexigen, Phenomix, Plexxikon, ReceptorBio, Rhythm, Salutria, Sanofi-Aventis, Shionogi, Sirtris, Takeda Pharmaceuticals, Teva, Veroscience, Zafgen.

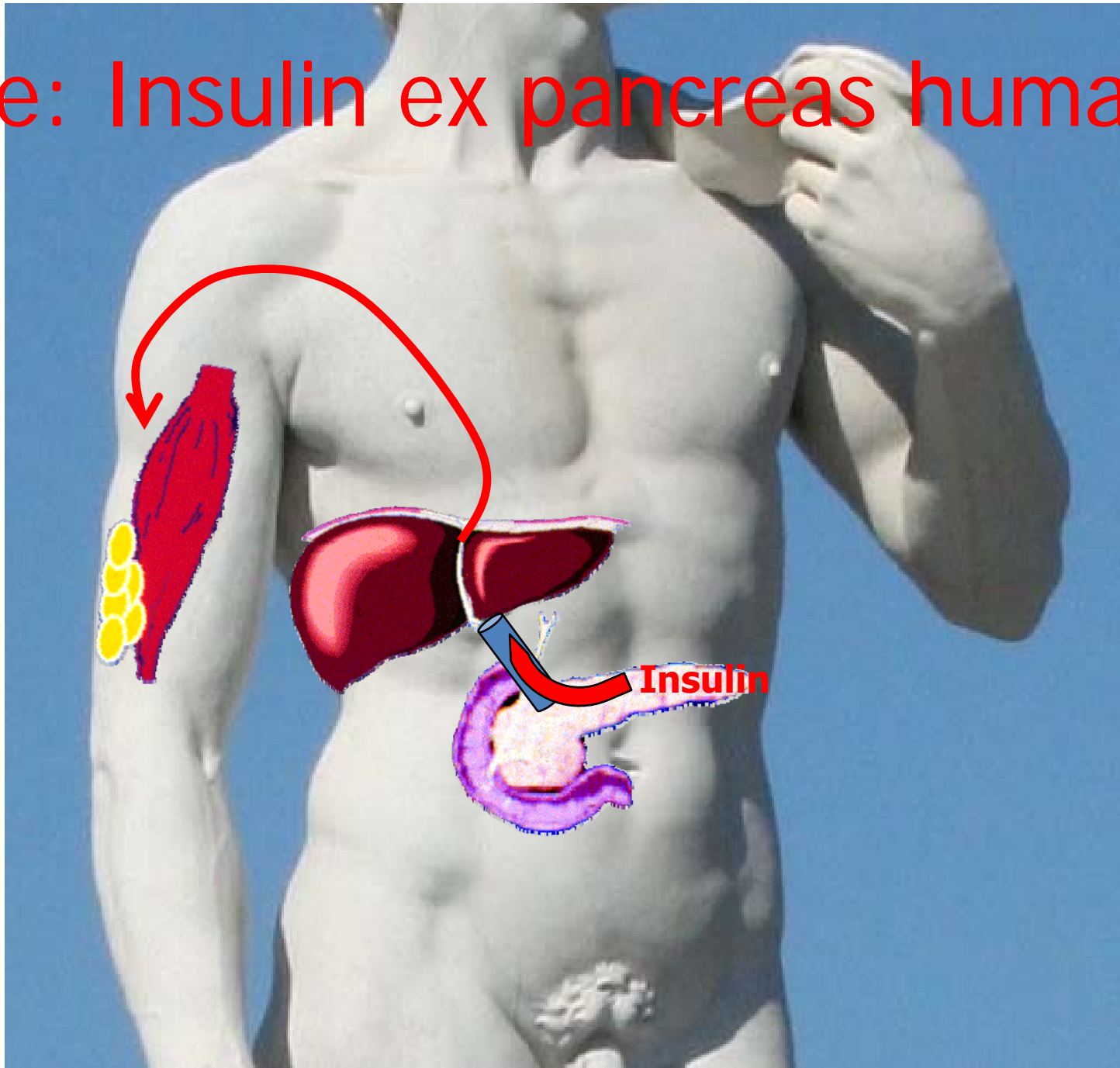
Stock/Shareholder: Exsulin Corporation

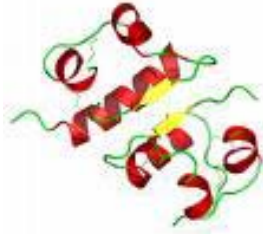
Other: Kinexum, principle

Overview

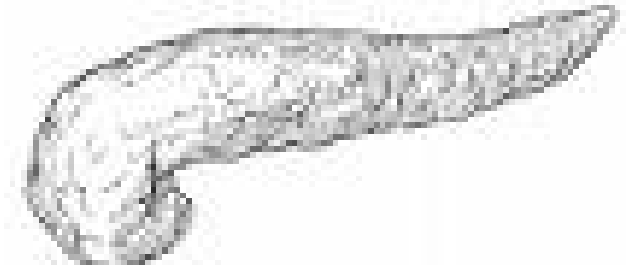
- **Addressing unmet clinical need**
- **Scientific rationale**
- **Current approaches**
- **Considerations for therapeutic development**
- **Regulatory Issues**

Ecce: Insulin ex pancreas humani



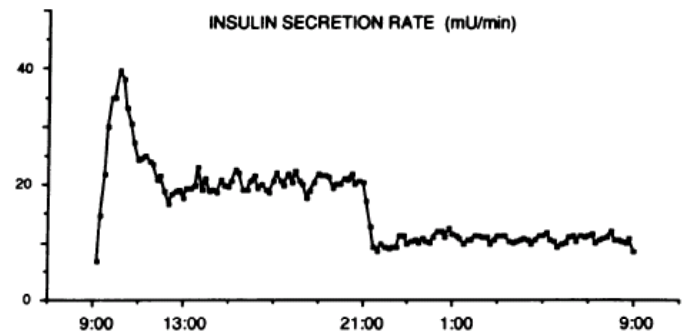


Insulin:



Hard to improve on Mother Nature

- **Because normally, insulin is secreted in—**
 - Just the right time (high and low frequency)
 - Just the right place
 - Just the right condition
 - Just the right cost and effort
- **And, insulin, the peptide has**
 - Just the right affinity for insulin and other receptors



Traditional reasons for trying to improve on human insulin:

- **Convenience**
- **Needleless administration**
- **Better metabolic control, body weight effects**
- **Less risk of hypoglycemia**
- **Less other safety concerns**
- **Affordability**



Addressing unmet clinical need for insulin delivery

- Convenience of non-injected insulin approaches becoming less important
- Injected insulin therapy very effective but safety depends on the glycemic goal
- The clear unmet clinical need is to improve the safety of insulin use—
not just hypoglycemia but
 - weight gain,
 - dyslipidemia
 - other adverse effects

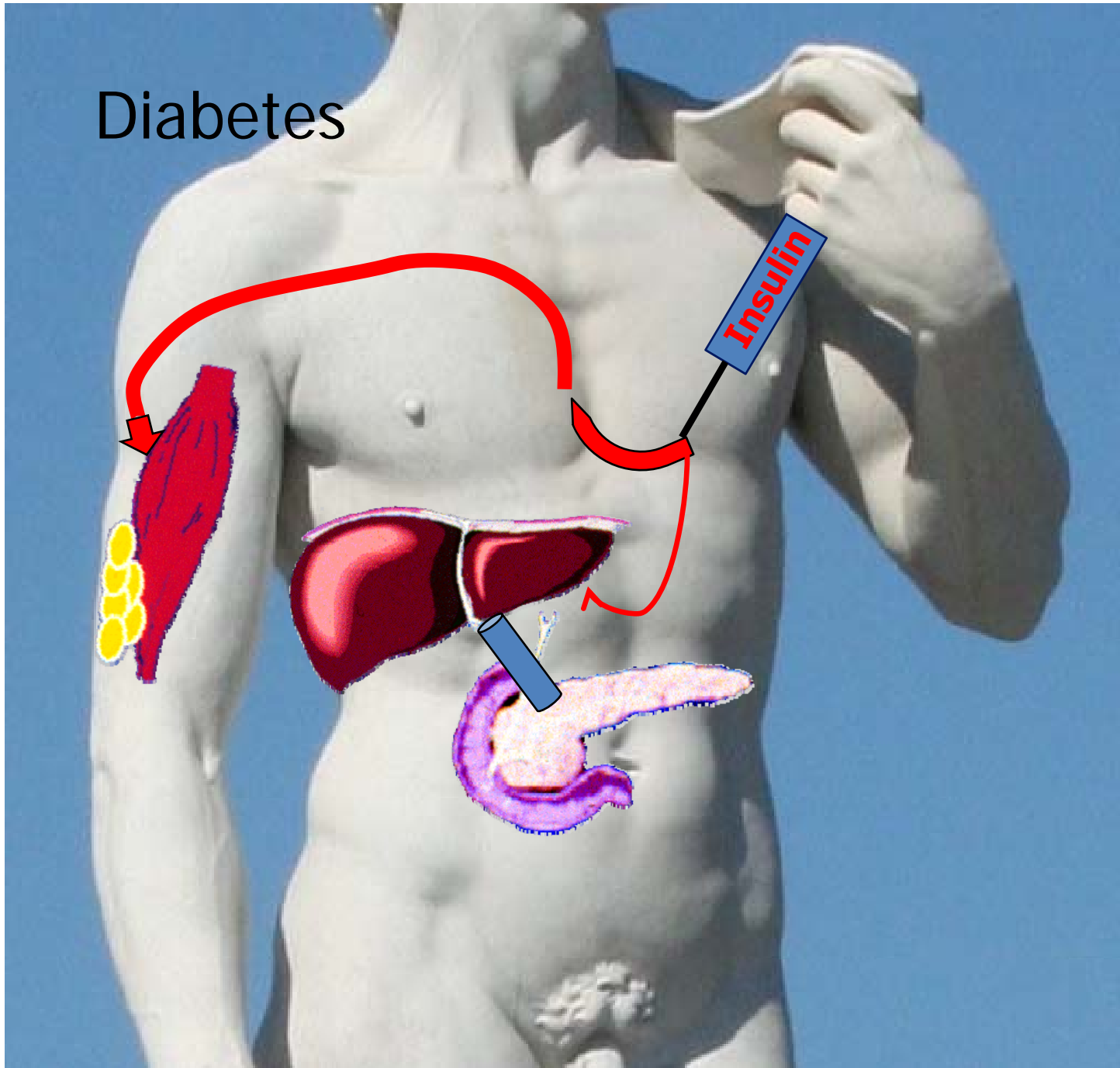


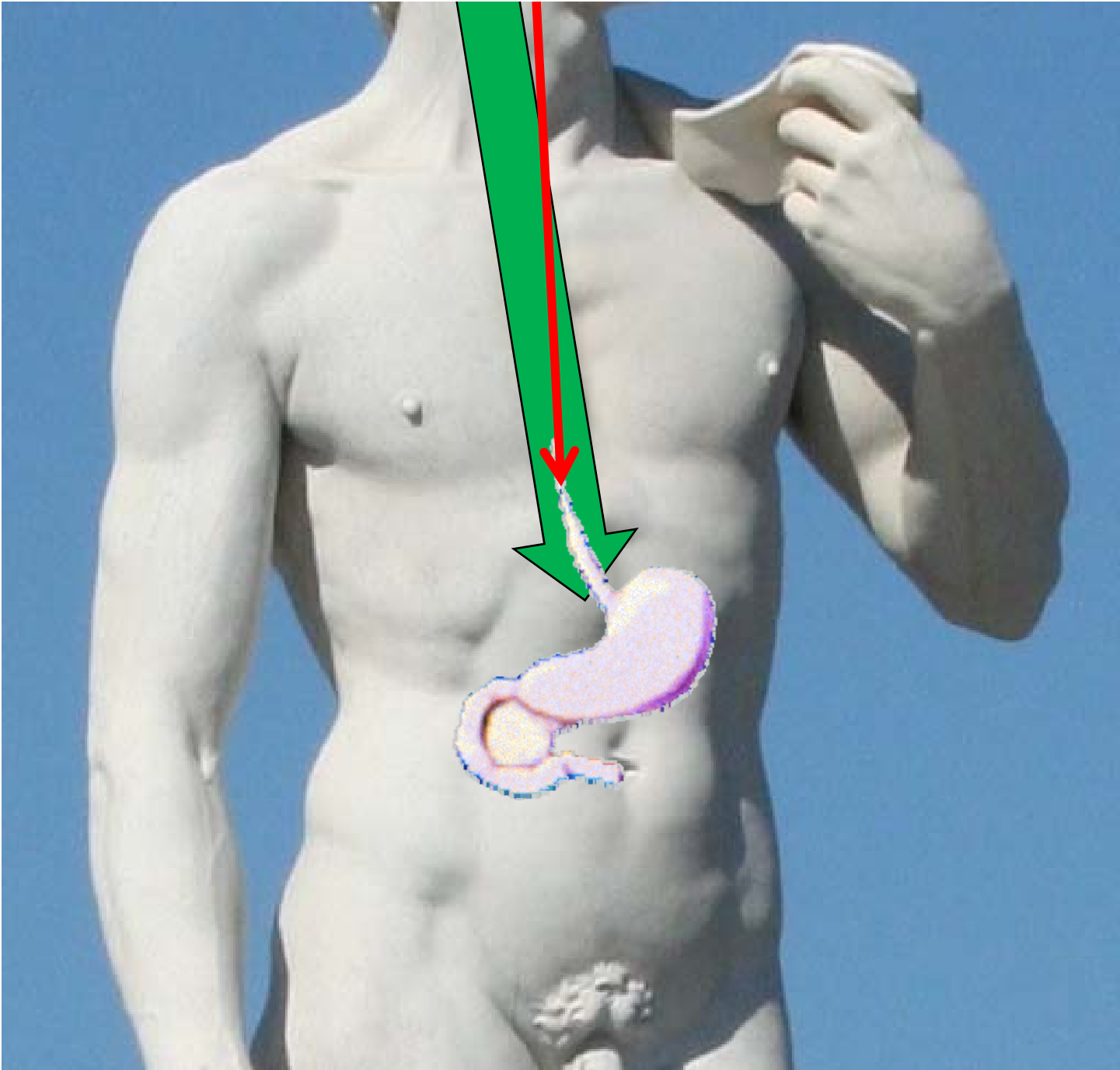
A long held hope:

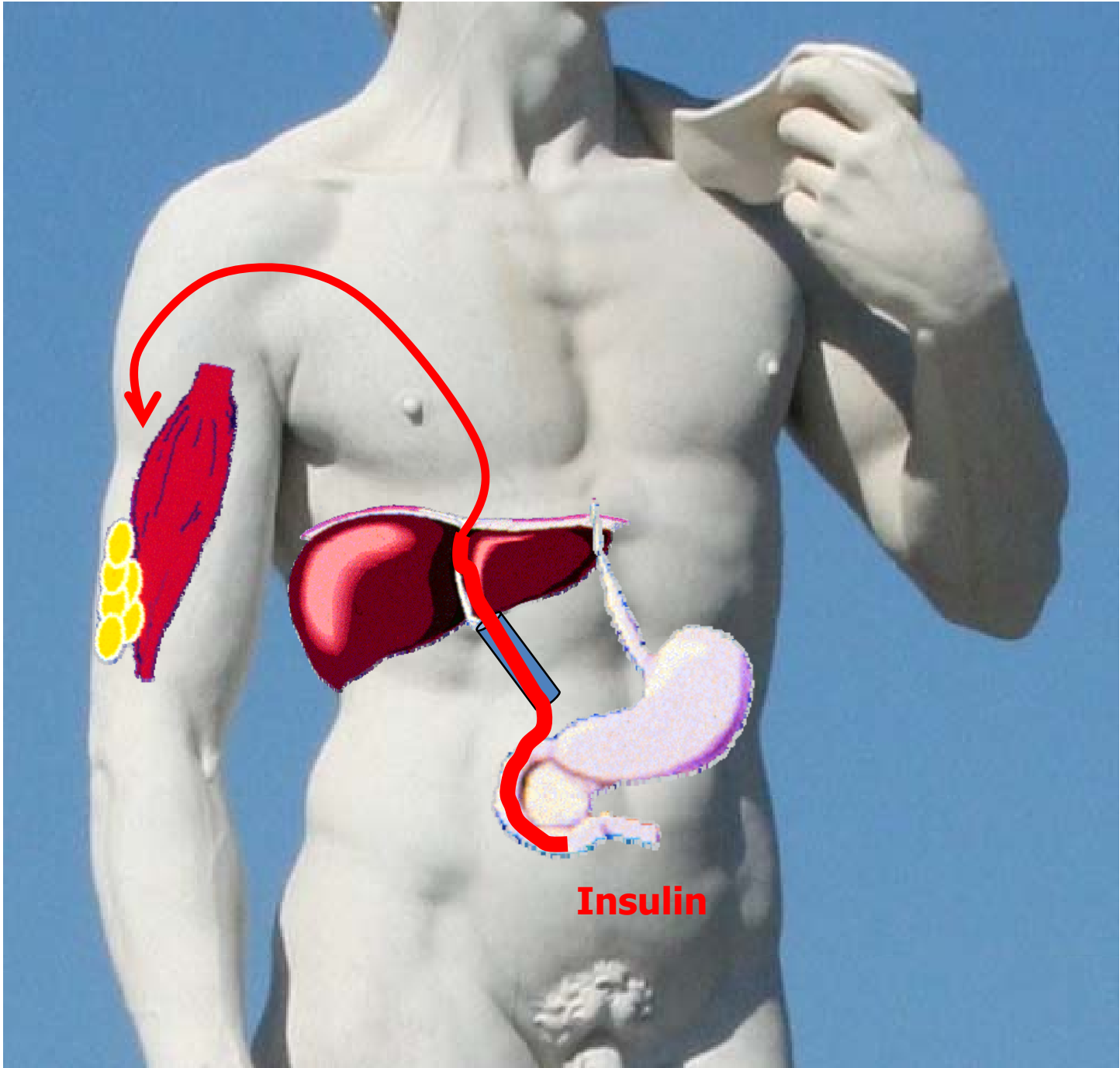
Oral delivered insulin could improved therapeutic index of insulin therapy

- **Oral insulin could correct under exposure of liver to insulin**
- **Absorption of insulin from the GI tract and transport through the portal venous system control both hepatic glucose output and peripheral glucose uptake**

Diabetes

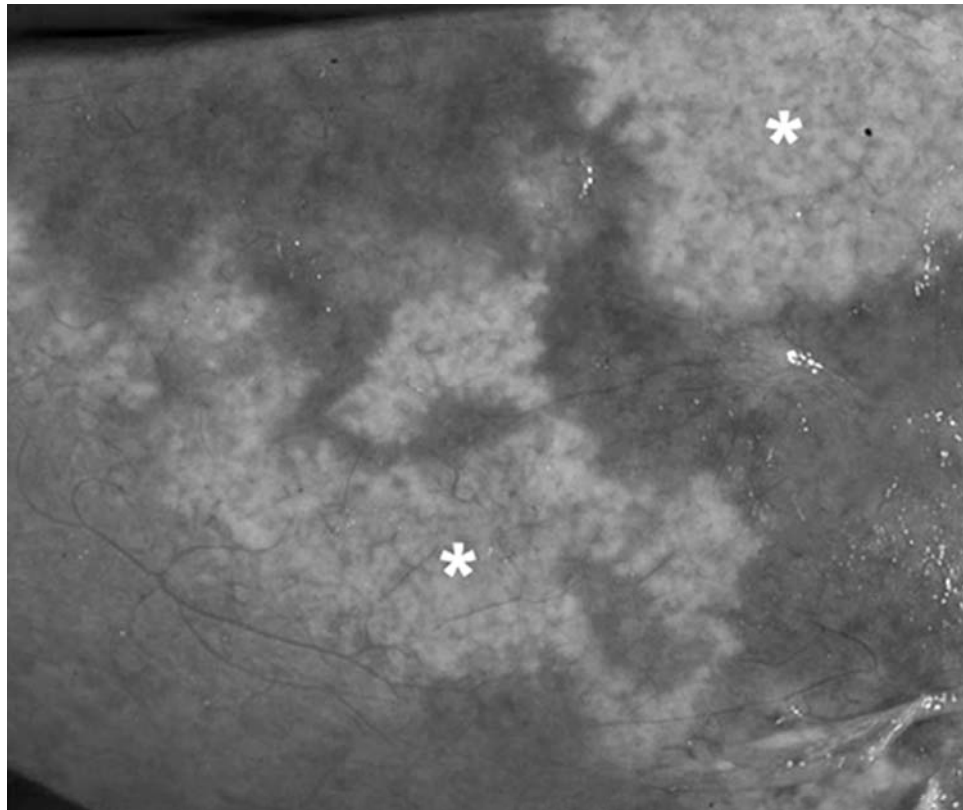






Caution: Unanticipated consequences

Subcapsular hepatic steatosis associated with intraperitoneal insulin



Khalili, K. et al. Am. J. Roentgenol. 2003;180:1601-1604

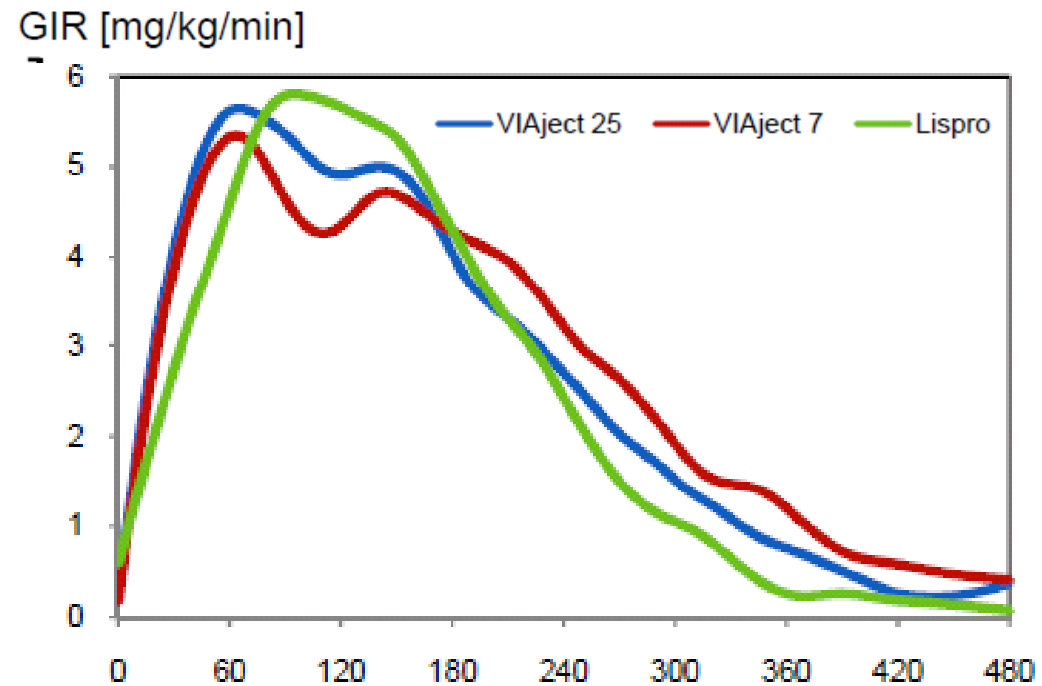
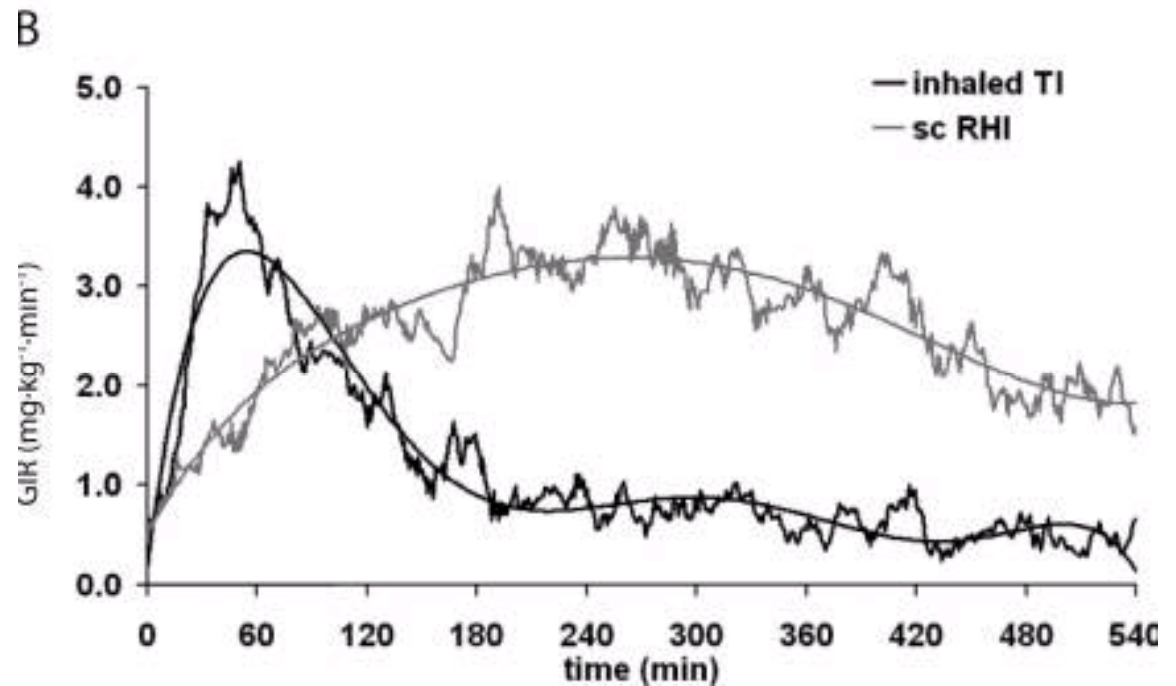
Oral Insulins Under Development

- **Multiple programs still active— both human insulin and insulin analog**
- **Challenges include low bioavailability and consistent performance**
- **Most are very rapidly acting—targeted at prandial coverage only**
- **Convenience of administration probably not enough but may offer some clinical benefits**

*See Heineman et al, Journal of Diabetes science and Technology, 2008

Ultra Fast Acting Insulins

- Potential to result in less risk of hypoglycemia
- Provide better glycemic control



Fast Acting Insulins

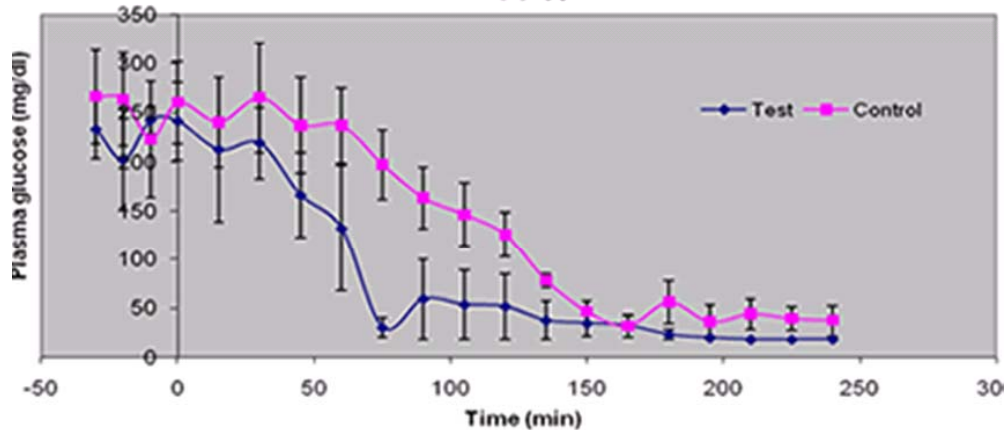
- **Multiple insulin development programs aimed at prandial coverage**
 - **Injected, monomeric Biondi**
 - **Inhaled Mannkind**
 - **Fast SQ release Halozyme**
 - **Nasal CPEX**
- **PK profile appears more physiologic than current injected insulins**
- **Will clinical benefits justify the additional costs as injected fast acting analogs become “generic”?**

Ultra Long Acting Insulins

- **Multiple insulin development programs aimed at >24 hour duration → Flamel, Novo, et al**
- **Some reports of lower day-to-day variability compared to glargine**
- **Will rates of hypoglycemia and compliance compare favorably to available long-acting insulin products?**

Smart Insulins

Mean plasma glucose level of Swine with 0.25U/Kg(4x) higher dose
1-7-08

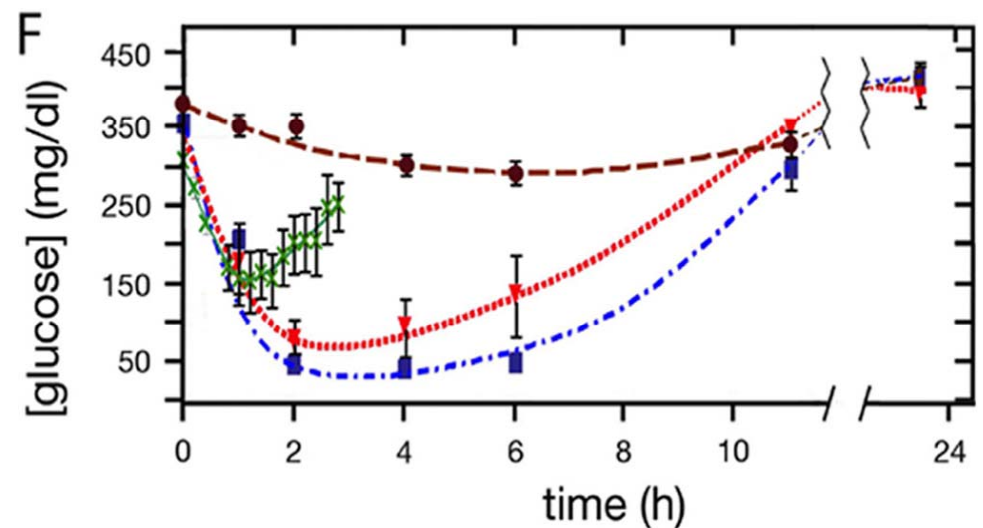
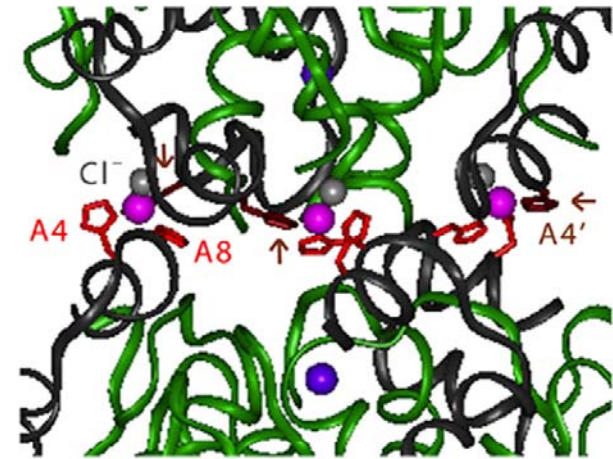


Comparison of plasma glucose levels of test and control groups before feeding.
Test group received smart basal formulation, while control group received insulin glargine alone.



DESIGN OF ZINC-STAPLED INSULIN HEXAMERS AS A LONG ACTING DEPOT*

JBC Papers in Press, 2010,
Nelson B. Phillips¹, Zhu-li Wan¹, Linda Whittaker[‡],
Shi-Quan Hu[‡], Kun Huang[‡], Qing-xin Hua[‡], Jonathan
Whittaker[‡],
Faramarz Ismail-Beigi[§], and Michael A. Weiss^{‡§2}



Pump insulins

Welcome to...

Juvenile Diabetes Research Foundation International



Involved

Locations

Life With Diabetes

Publications

Advocacy

About JDRF

Donate Now

EBOOK



PRINT PAGE



EMAIL PAGE

SEARCH

press release

JDRF Launches Research Program to Accelerate Delivery of Faster Acting Insulin; Key Step on Road to an Artificial Pancreas

Media Contact:

Joana Casas, (212) 479-7560, mcasas@jdrf.org

William Ahearn, (212) 479-7531, wahearn@jdrf.org

NEW YORK, August 16, 2010 - JDRF announced today another important step on the road to the development of an artificial pancreas - an automated system to better manage the blood sugar of people with type 1 diabetes - with the establishment of a research program to speed the development of faster-acting insulin.

**Challenge: Clinical Design
and Regulatory Evaluation**

Guidance for Industry

Diabetes Mellitus — Evaluating Cardiovascular Risk in New Antidiabetic Therapies to Treat Type 2 Diabetes

Additional copies are available from:

*Office of Communications
Division of Drug Information
Center for Drug Evaluation and Research
Food and Drug Administration
10903 New Hampshire Ave., Bldg. 51, rm. 2201
Silver Spring, MD 20993-0002
E-mail: druginfo@fda.hhs.gov
Fax: 301-847-8714
(Tel) 301-796-3400
<http://www.fda.gov/cder/guidance/index.htm>*

Challenge: Clinical Design and Regulatory Evaluation

- **Conventional insulin paradigm**
 - Open label
 - Non-inferiority comparison to another insulin product
 - Aimed at T1 and T2DM
- **Oral agent paradigm**
 - Double blind
 - Add on to background therapy
 - Comparison to placebo
 - Aimed at T2DM

Safety concerns/opportunities for insulin products

- **Hypoglycemia...hypoglycemia...hypoglycemia...**
- **Weight gain and dyslipidemia**
- **Risk of increased cancer risk**
- **Antigenicity**

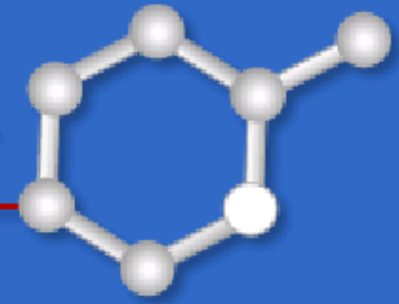
Summary

- **Currently available insulin products still allow room for improvement of new insulin products**
- **New insulin products will need to show substantial advantages to be successful**
- **Progress is likely to be incremental**



DIABETES TECHNOLOGY SOCIETY

Applying science and engineering to fight diabetes



Re-Engineering Insulin: Can We Improve on Mother Nature?

We need to try.

